



**WE
ARE
ATTACHMENTS
EXPERTS**

Italy, United States & Colombia

CONSTRUCTION & MINING EQUIPMENT TOOLS

STATE-OF-THE-ART

- ENGINEERING
- MANUFACTURING
- GLOBAL LOGISTICS
- CUSTOMER TRAINING
- PRODUCT SUPPORT



ITALY



COLOMBIA



USA





**We are the only purple
tool, which replaces all
yellow attachments...
And any others!**

MAZIO

#AttachmentsExperts



The Most Powerful Processor in the Industry

HARDOX®

MC Series

Interchangeable Jaw System

Choose the fitting kit for Demolition, Recycling, and Scrap Applications.

MC Series is the best expression of functionality and versatility. Thanks to many kits applied to the main structure of the machine, the MC series satisfies every need and every situation during demolition works.

- A structure entirely made in HARDOX and WELDOX;
- Innovative PRV (Pressure Relief Valve) system to protect the crusher from high pressure;
- Two powerful reversed cylinders to protect the rod from accidental hurts;
- Some models have a regenerative installation;
- Hydraulic rotation;
- An integrated hydraulic installation permits the multi-system to make a 360° rotation in both directions to have a fast, accurate, and efficient positioning of the jaws in any working condition. It is suitable for operators who are going to use excavators with very long booms;
- Innovative system of interchangeable teeth.



Multiple Jaw Options:



CRUSHER KIT

It has been designed for primary demolition: demolition of concrete structures.



UNIVERSAL KIT

Designed for primary and secondary demolition, it permits the cut of the reinforced bar together with the concrete



COMBI-CUTTER KIT

It is ideal for mixed demolitions: concrete and metallic structures.



PULVERIZER KIT

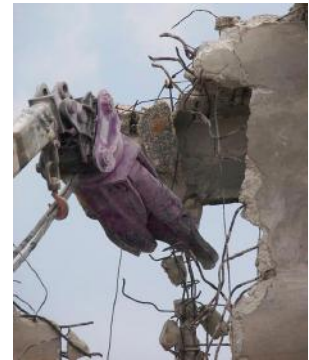
It is particularly indicated for secondary demolition: it separates rods from concrete.



SHEAR KIT

It has been designed for cutting iron: structural steel, pipelines, tanks, sheets and iron and steel cases.









MC MODEL (CRUSHER KIT)	Units	MC 5	MC 7	MC 10	MC 15	MC 18	MC 24	MC 30	MC 40	MC 55	MC 80	MC 110
OPENING A (CRUSHER KIT)	mm	410	525	670	710	800	850	920	1150	1300	1700	1900
	in	16,15	20,7	26,4	27,95	31,5	33,5	36,2	45,28	51,18	66,93	74,8
LENGTH B (CRUSHER KIT)	mm	1020	1446	1680	1900	2050	2200	2420	2600	2850	3200	3500
	in	40,2	56,9	66,1	74,8	80,7	86,6	95,3	102,4	112,2	126	137,8
WIDTH P (CRUSHER KIT)	mm	250	350	475	520	540	540	550	600	810	1110	1240
	in	9,85	13,78	18,7	20,47	21,26	21,26	21,65	23,62	31,89	43,7	48,82
EXCAVATOR WEIGHT	ton	4/8	7/11	12/15	14/19	21/28	26/36	30/38	36/50	50/70	80/100	85/130
	lbs	8000/	14000/	24000/	28000/	42000/	52000/	60000/	72000/	100000/	160000/	170000/
		16000	22000	30000	38000	56000	72000	76000	100000	140000	200000	260000
EQUIPMENT WEIGHT (CRUSHER KIT)	Kg	400	720	1000	1400	1900	2450	3120	3800	52000	7800	10800
	lbs	881	1587	2204	3086	4188	5401	6878	8377	11464	17196	23810
OIL PRESSURE	bar	250	300	300	340	340	340	340	340	340	340	340
	psi	3625	4351	4351	4641	4641	4641	4641	4641	4641	4931	4931
OIL CAPACITY	lt/min	30/50	140/180	150/160	200/240	250/300	280/350	280/360	300/350	300/380	400/500	500/600
	gal/min	7/13	37/48	39/42	58/63	58/68	63/79	63/79	79/92	79/100	106/132	132/158
ROTATION OIL PRESSURE	bar	50	60	60	140	140	140	140	140	140	140	140
	psi	725	870	870	870	870	870	870	870	1450	1450	1450
ROTATION OIL CAPACITY	lt/min	15	25	25/30	25/30	25/30	25/30	25/30	25/30	25/30	50/60	50/60
	gal/min	1,3	6,6	8	8	8	8	8	8	8	16	16

MC MODEL (PULVERIZER KIT)	Unit	MC 5	MC 7	MC 10	MC 15	MC 18	MC 24	MC 30	MC 40	MC 55	MC 80	MC 110
OPENING (PULVERIZER KIT)	mm	310	500	570	650	800	830	920	980	1100	1600	1800
	in	12,2	19,7	23,6	26,8	31,5	32,7	35,4	38,6	43,3	63	70,9
LENGTH B (PULVERIZER KIT)	mm	1020	1486	1715	1920	2080	2210	2450	2600	2870	3355	3685
	in	40,16	58,50	67,52	75,59	81,89	87	96,46	102,36	112,99	132,09	145,08
WIDTH P (PULVERIZER KIT)	mm	250	390	510	540	570	510	550	600	870	1265	1425
	in	9,84	15,35	20,08	21,26	22,44	20,08	21,65	23,62	34,25	49,80	56,10
EQUIPMENT WEIGHT (PULVERIZER KIT)	Kg	100	250	310	420	500	820	850	1250	1620	2800	3800
	lbs	220	551	683	926	1102	1808	1874	2756	3571	6173	8378





MC MODEL (SHEAR KIT)	Unit	MC 5	MC 7	MC 10	MC 15	MC 18	MC 24	MC 30	MC 40	MC 55	MC 80	MC 110
OPENING A (SHEAR KIT)	mm	340	270	370	360	460	540	560	620	700	750	800
	in.	13,4	10,7	13,8	14,20	18,1	20,1	22	24,4	27,6	29,5	31,5
LENGTH B (SHEAR KIT)	mm	1050	1466	1545	1740	1910	2100	2300	2430	2525	2610	2815
	in.	41,33	57,71	60,82	68,5	75,19	82,68	90,55	95,66	99,41	102,76	110,83
WIDTH P (SHEAR KIT)	mm	280	370	340	360	400	400	410	430	485	520	555
	in.	11,02	14,57	13,38	14,17	15,75	15,75	16,14	16,92	19,09	20,47	21,85
EQUIPMENT WEIGHT (SHEAR KIT)	Kg	92	180	240	400	430	700	780	1100	1580	2000	2500
	lbs	203	397	529	882	948	1543	1720	2425	3483	4409	5511

MC MODEL (COMBI KIT)	U.M.	MC 5	MC 7	MC 10	MC 15	MC 18	MC 24	MC 30	MC 40	MC 55	MC 80	MC 110
OPENING A (COMBY KIT)	mm			660	720	830	865	870	1100	1300	1600	1750
	in.			26	28,34	32,68	34,05	34,25	43,3	51,2	63	68,9
LENGTH B (COMBY KIT)	mm			1695	1955	2115	2230	2485	2500	2750	3015	3270
	in.			66,73	70,08	83,27	87,79	97,83	98,42	108,27	118,70	128,74
WIDTH P (COMBY KIT)	mm			490	575	605	570	615	500	750	925	1010
	in.			19,29	22,64	23,82	22,45	24,21	19,68	29,52	36,42	39,76
EQUIPMENT WEIGHT (COMBI KIT)	Kg			300	430	470	750	780	1150	1350	2550	3750
	lbs			661	948	1036	1653	1720	2535	2976	5622	8267

MC MODEL (UNIVERSAL KIT)	U.M.	MC 5	MC 7	MC 10	MC 15	MC 18	MC 24	MC 30	MC 40	MC 55	MC 80	MC 110
OPENING A (UNIVERSAL KIT)	mm			600	610	630	770	800	820	1000	1400	1565
	in.			23,6	26,8	24,8	30,3	31,5	32,3	39,4	55,1	61,61
LENGTH B (UNIVERSAL KIT)	mm			1655	1835	1980	2320	2390	2650	2795	3205	3506
	in.			65,16	72,24	77,95	91,33	94,09	104,33	110,04	126,18	138,03
WIDTH P (UNIVERSAL KIT)	mm			450	455	470	470	500	650	795	1115	1246
	in.			17,72	17,91	18,50	18,50	19,68	25,59	31,30	43,90	49,06
EQUIPMENT WEIGHT (UNIVERSAL KIT)	Kg			320	430	580	850	900	1150	1650	2600	3600
	lbs			705	948	1279	1874	1984	2535	3638	5732	7937






Mazio Attachments LLC

7548 South Us HWAY 1 #395,
Port Saint Lucie, Fl. 34952

Phone: +1 (561) 766 0899

Email: sales@mazio.us

f  @mazioattachments

www.mazio.us